

**Early, but invasive,
needs to be decisive...**

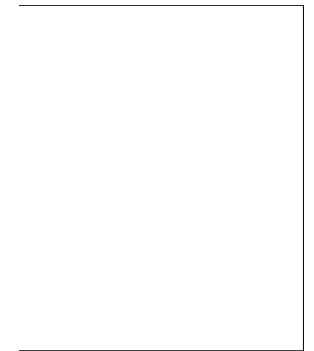
early CRC diagnosis needs right action

Prof. Jan Žaloudík, MD, PhD

Faecal occult blood testing in the Czech Republic

2008-2009, N = 764 761 FOBTs)

*Ɔokrytí
' procentech*



Total coverage (2008-2009): 20,2 % (range 9,3-30,2 %)

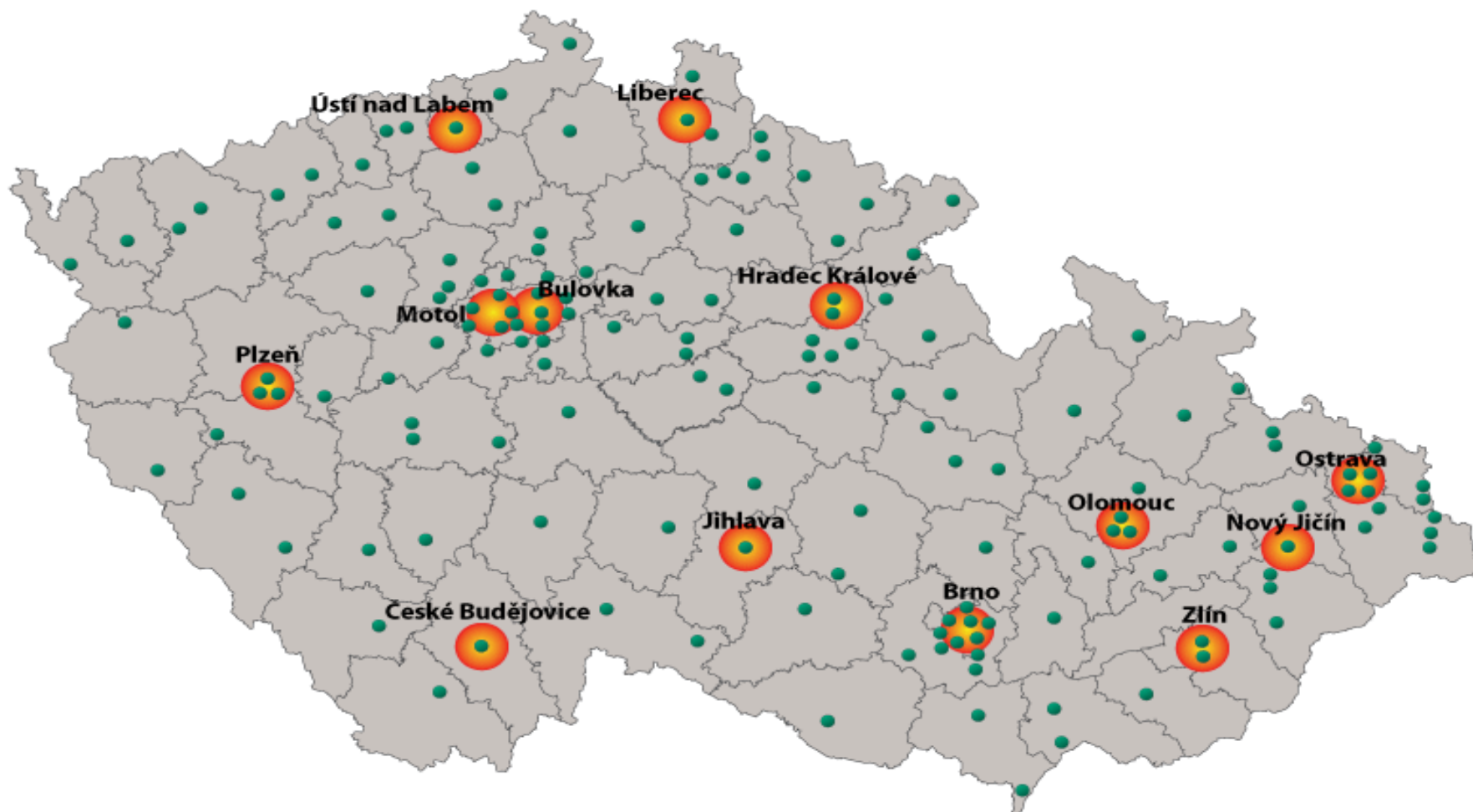
Czech colorectal cancer screening network : colonoscopy units



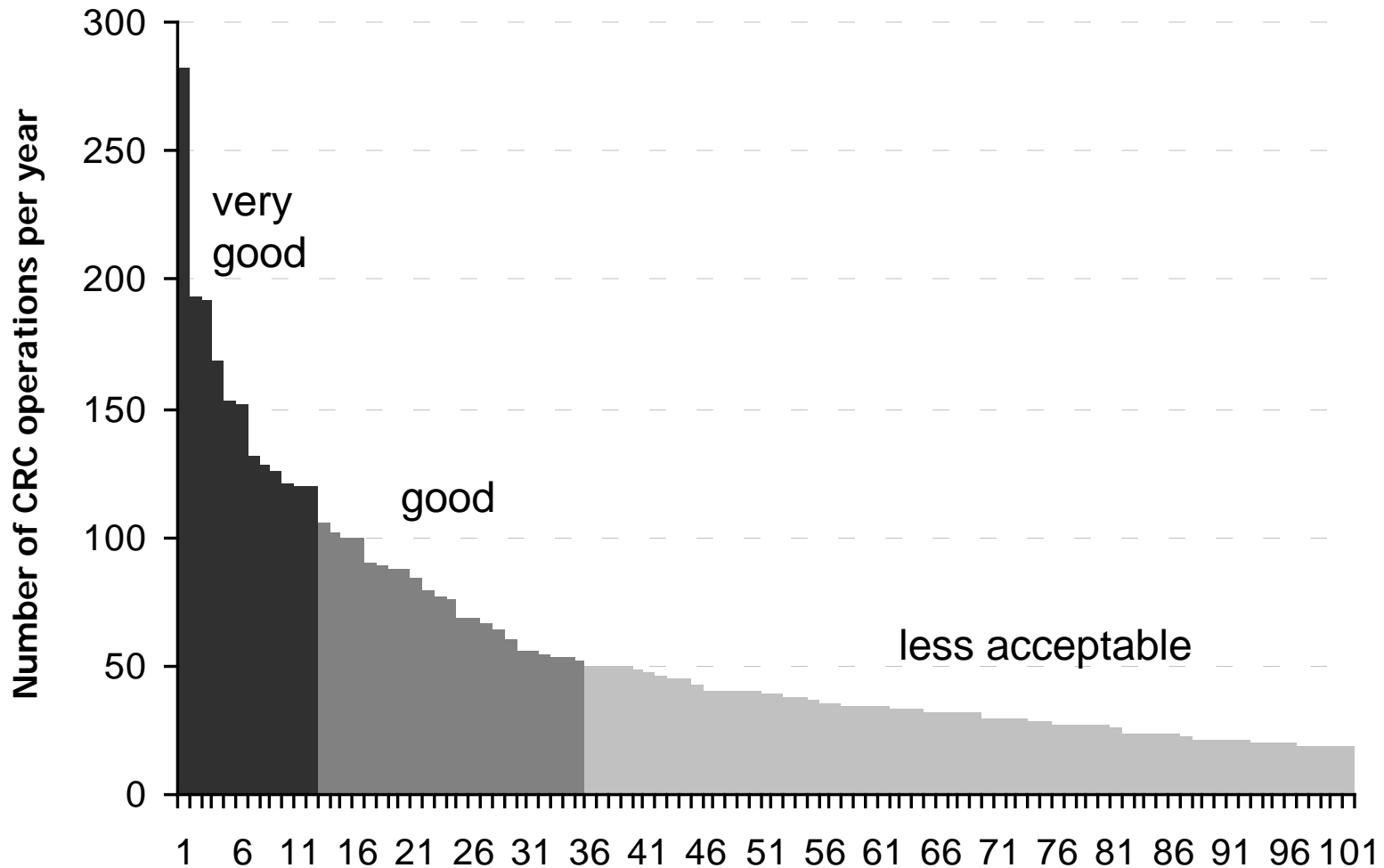
Surgical departments performing colorectal cancer surgery

in the Czech Republic : 157

Regional cancer centers : 13



Distribution of surgical departments by numbers of primary operations for colorectal carcinoma in the Czech Republic (2006-2010)



Specific indicators in surgical oncology of CRC

No/T Re/St/InG Sur/GEO/Ns (J.Zaloudik, 2009)

basic quality-related parameters for surgical oncology

confidence-based medicine versus evidence-based medicine

Diagnostic criteria derived from surgeon and pathologist :

No – **N**odes

T – Tumor : **T** category/ histological **T**yping

Re – **R**esection margins (as estimated by histopathologist)

St - postoperative **S**tage

InG – **I**nvestigation on **G**rade (biology - target molecules, receptors)

Performance of surgical department :

Sur – **S**urvival rates (compared with country/regional average, progress in time)

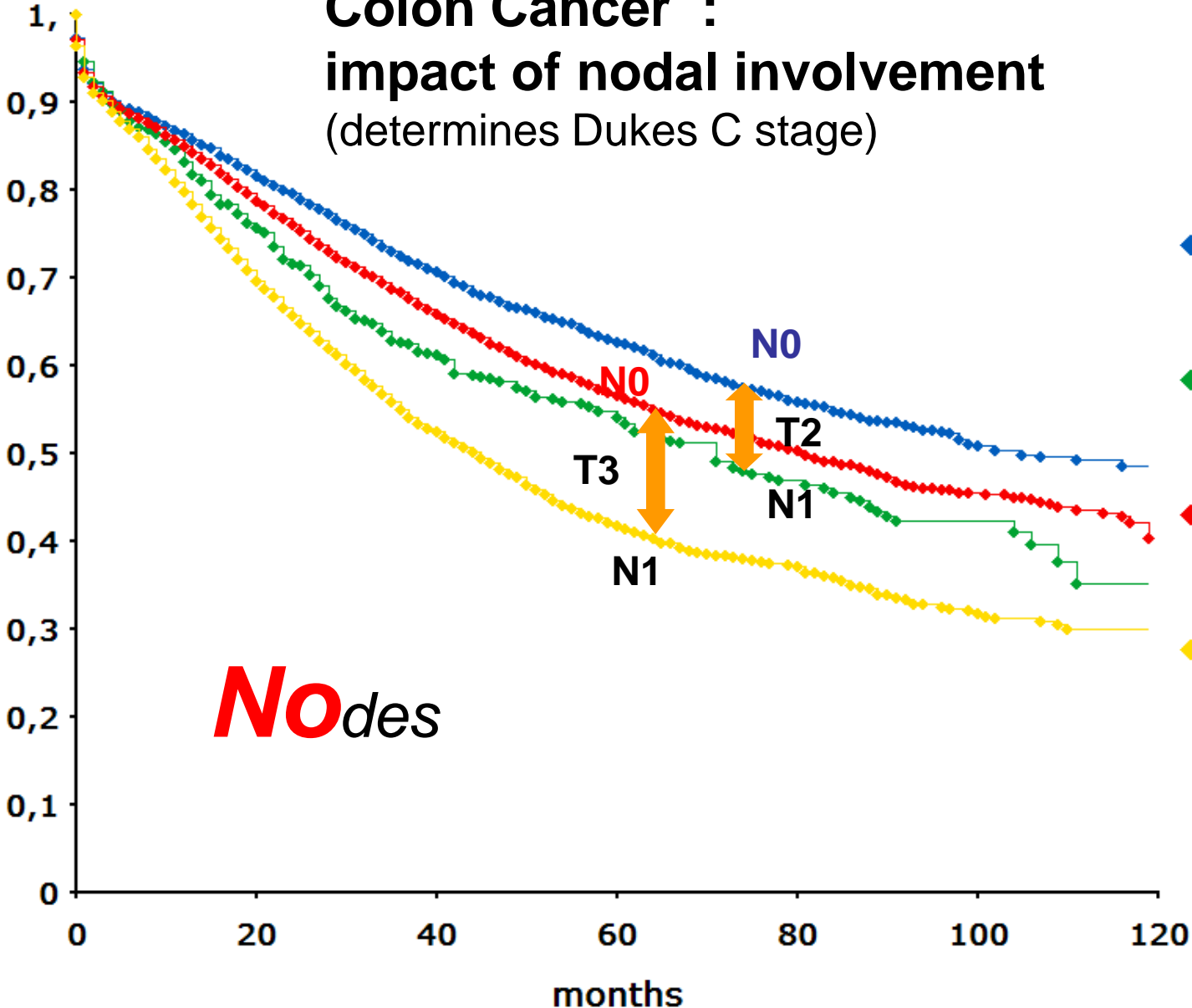
GEO – **G**uaranteed **E**stimation by **O**ncologists – teamwork : **51881**

Ns – **N**umbers of operated cases (volume effect)

Colon Cancer : impact of nodal involvement (determines Dukes C stage)

overall survival

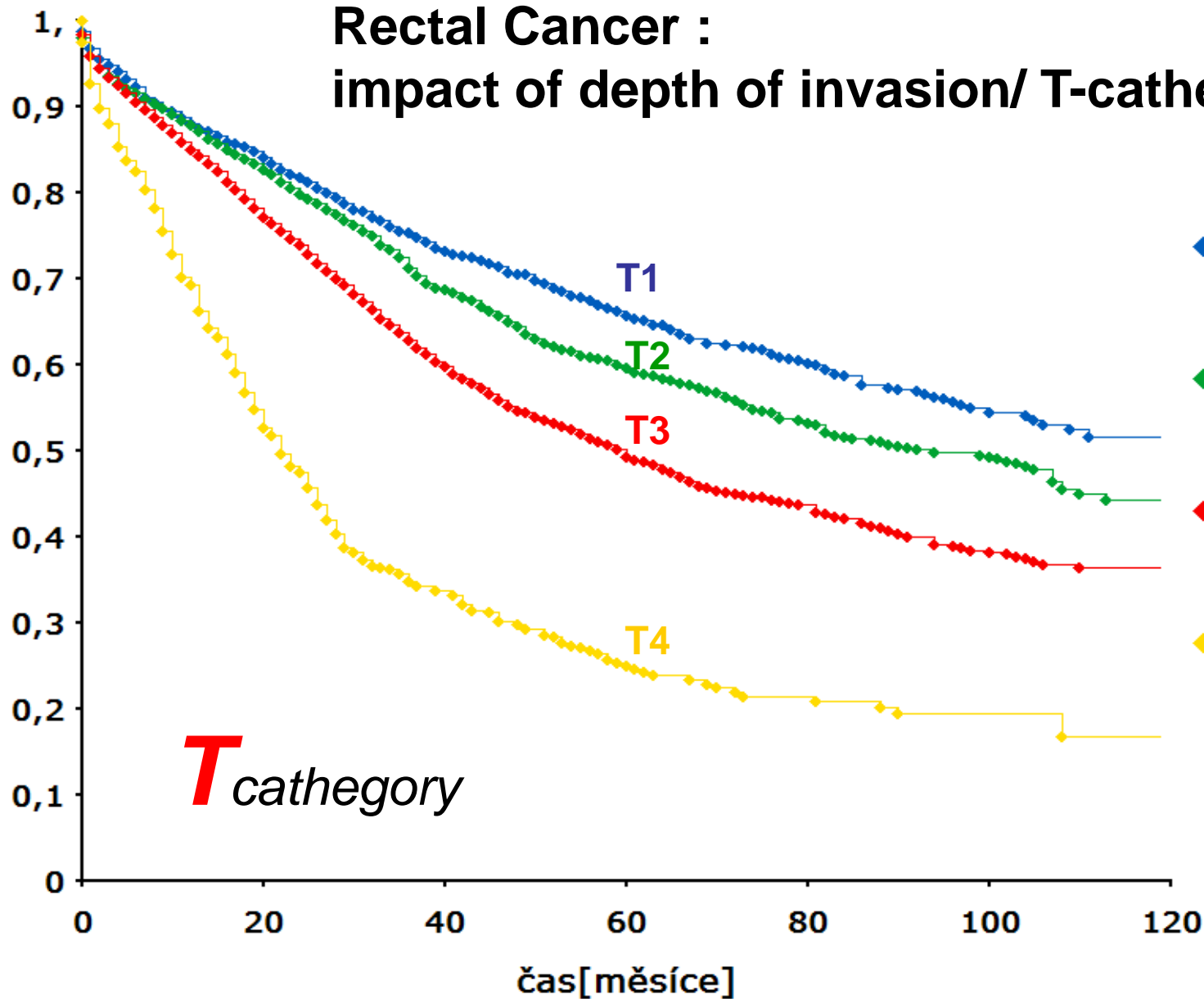
No
des



T

Rectal Cancer : impact of depth of invasion/ T-cathegory

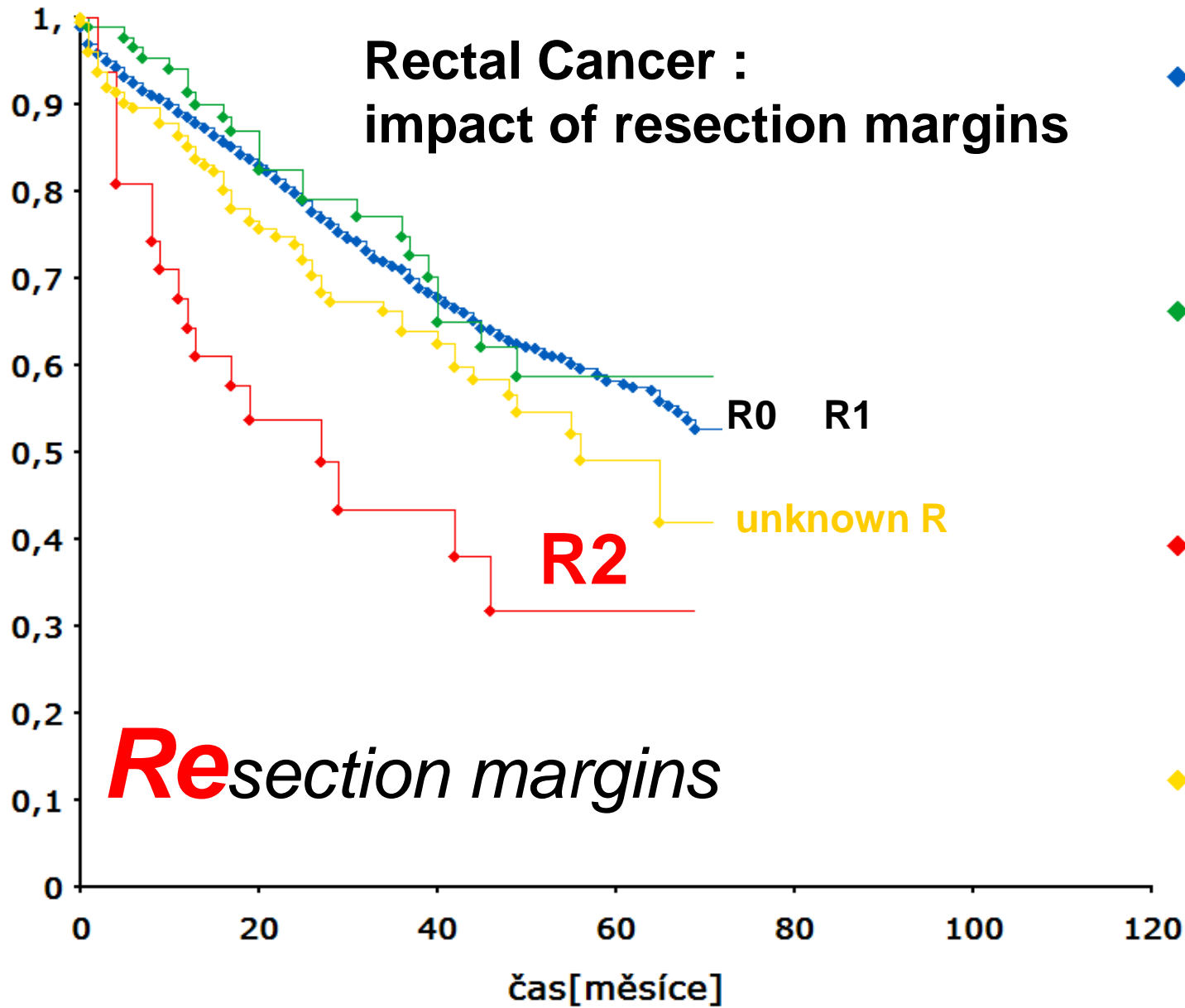
Kumulativní podíl přežívajících



Re

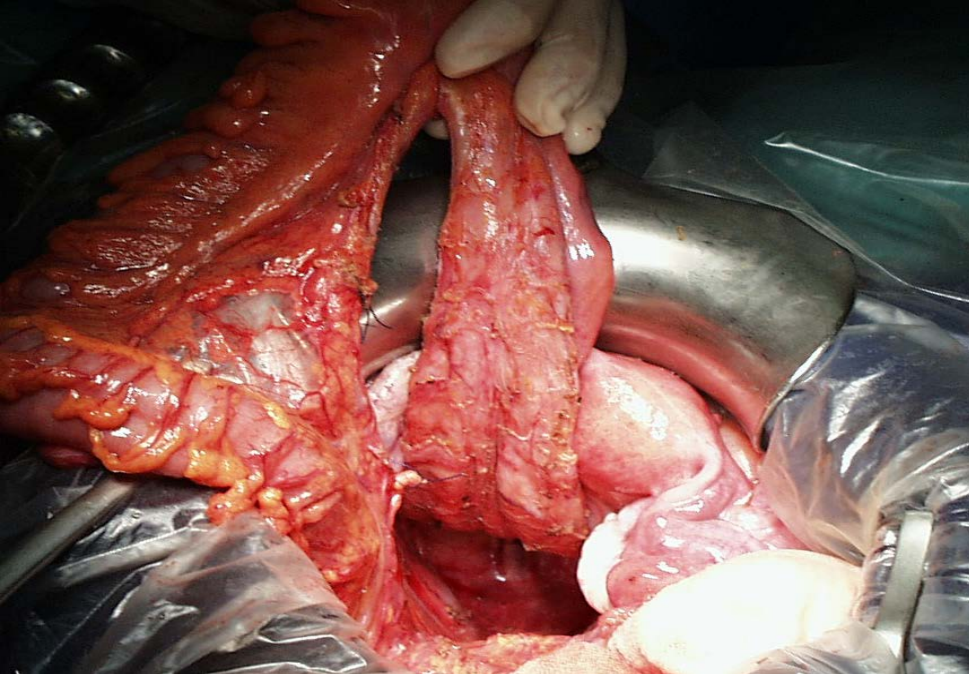
Rectal Cancer : impact of resection margins

Kumulativní podíl přežívajících



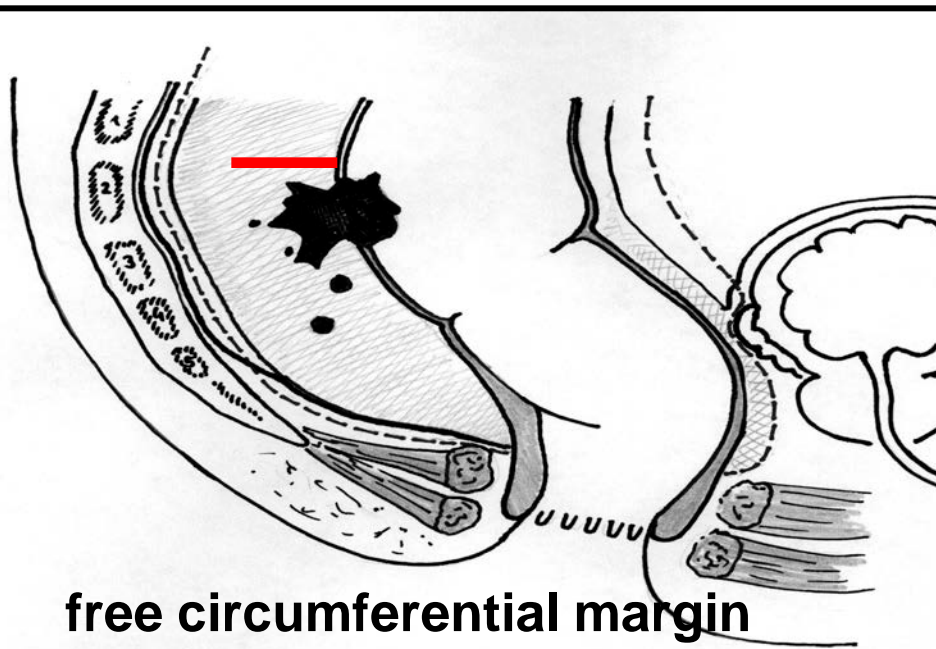
- ◆ rok dg.: 1996 - 2005, stadium: 2, odstranění nádoru: R0 žádný reziduální nádor, (n=2225)
- ◆ rok dg.: 1996 - 2005, stadium: 2, odstranění nádoru: R1 mikroskopický reziduální nádor, (n=92)
- ◆ rok dg.: 1996 - 2005, stadium: 2, odstranění nádoru: R2 makroskopický reziduální nádor, (n=33)
- ◆ rok dg.: 1996 - 2005, stadium: 2, odstranění nádoru: neznámo, (n=178)

Resection margins



total mesorectal excision (TME)

colonic cancer and rectal cancer are two different clinical entities

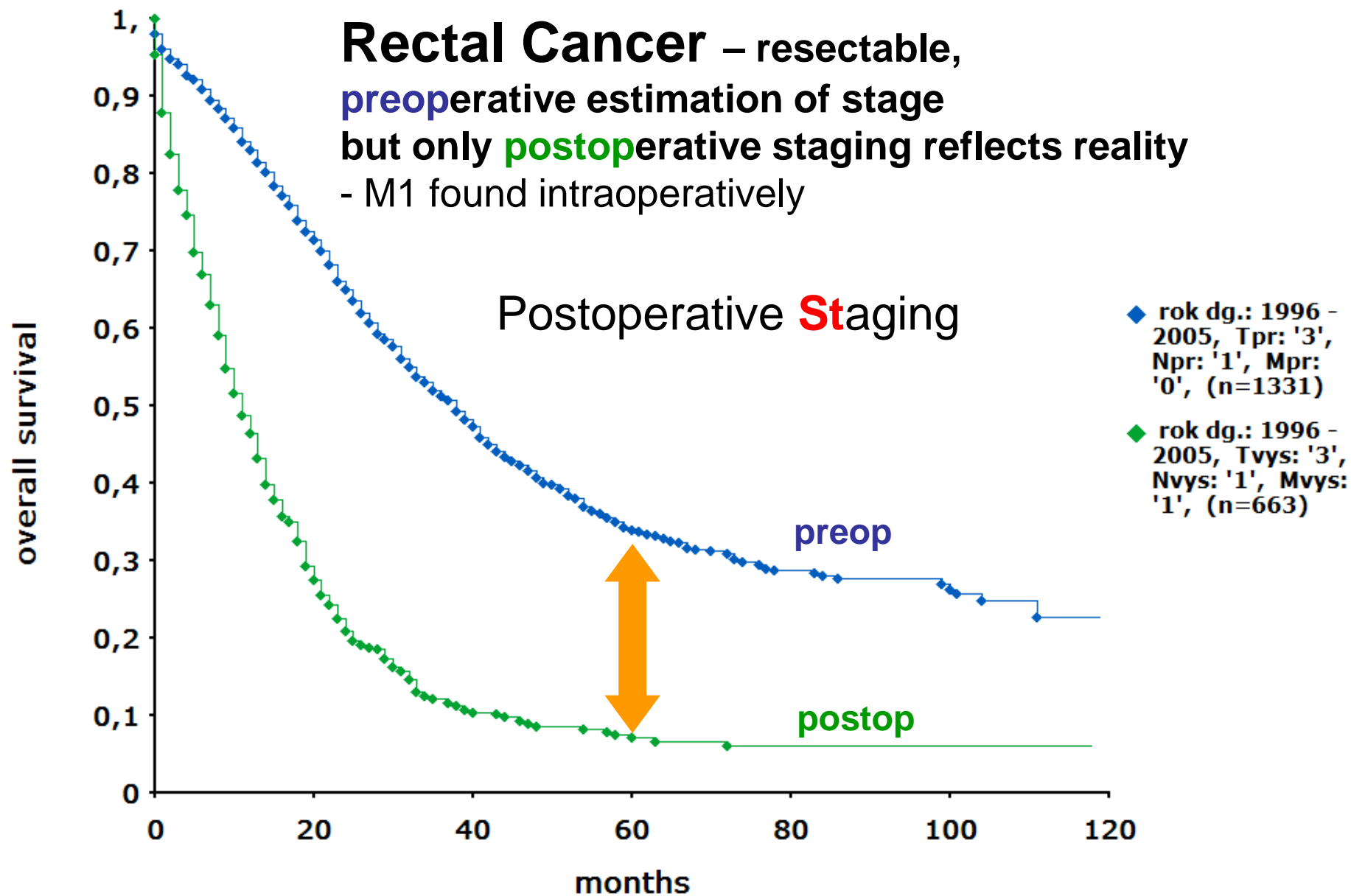


free circumferential margin



St

Rectal Cancer – resectable,
preoperative estimation of stage
but only **postoperative** staging reflects reality
- M1 found intraoperatively

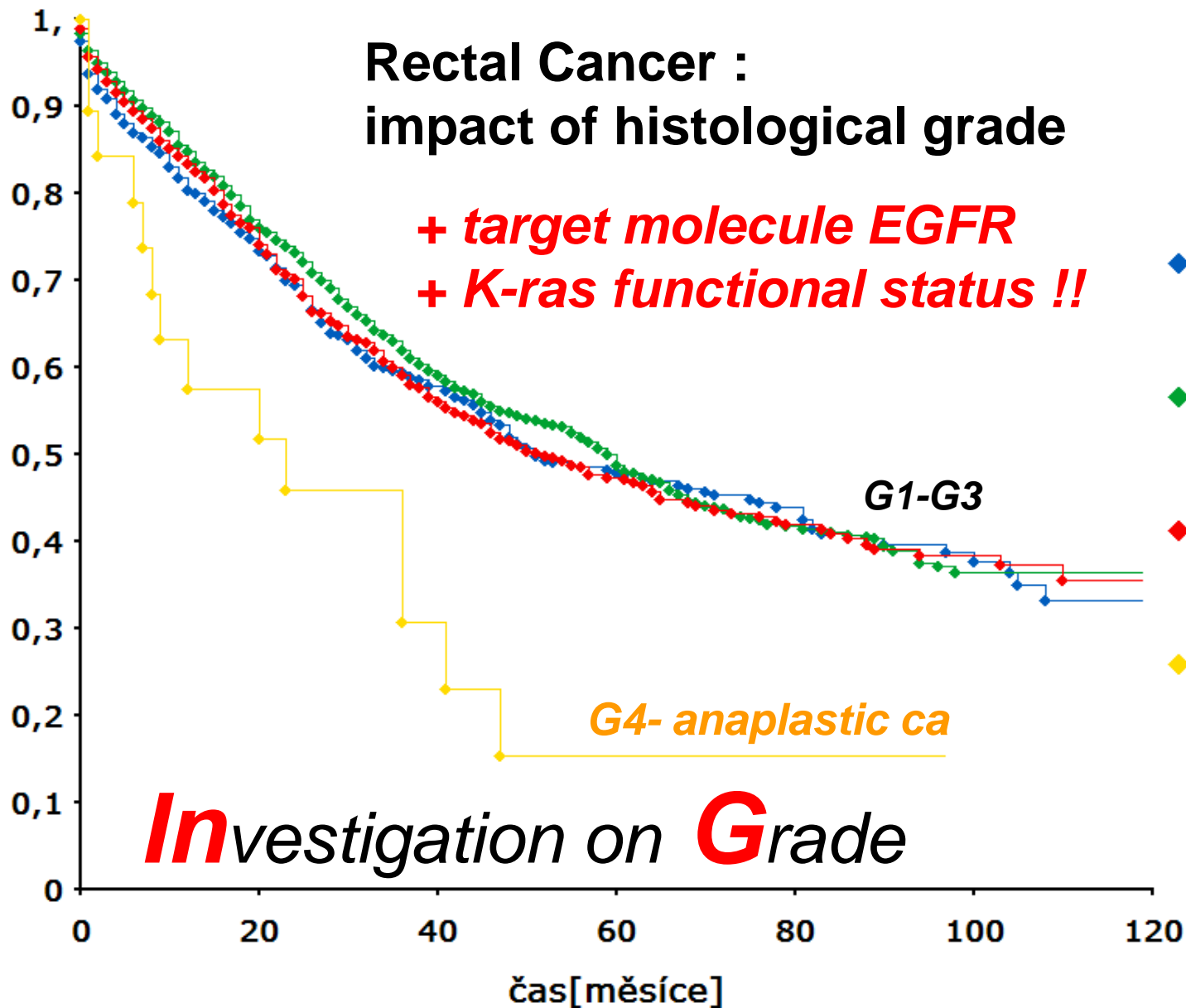


InG

Rectal Cancer : impact of histological grade

+ target molecule EGFR
+ K-ras functional status !!

Kumulativní podíl přežívajících



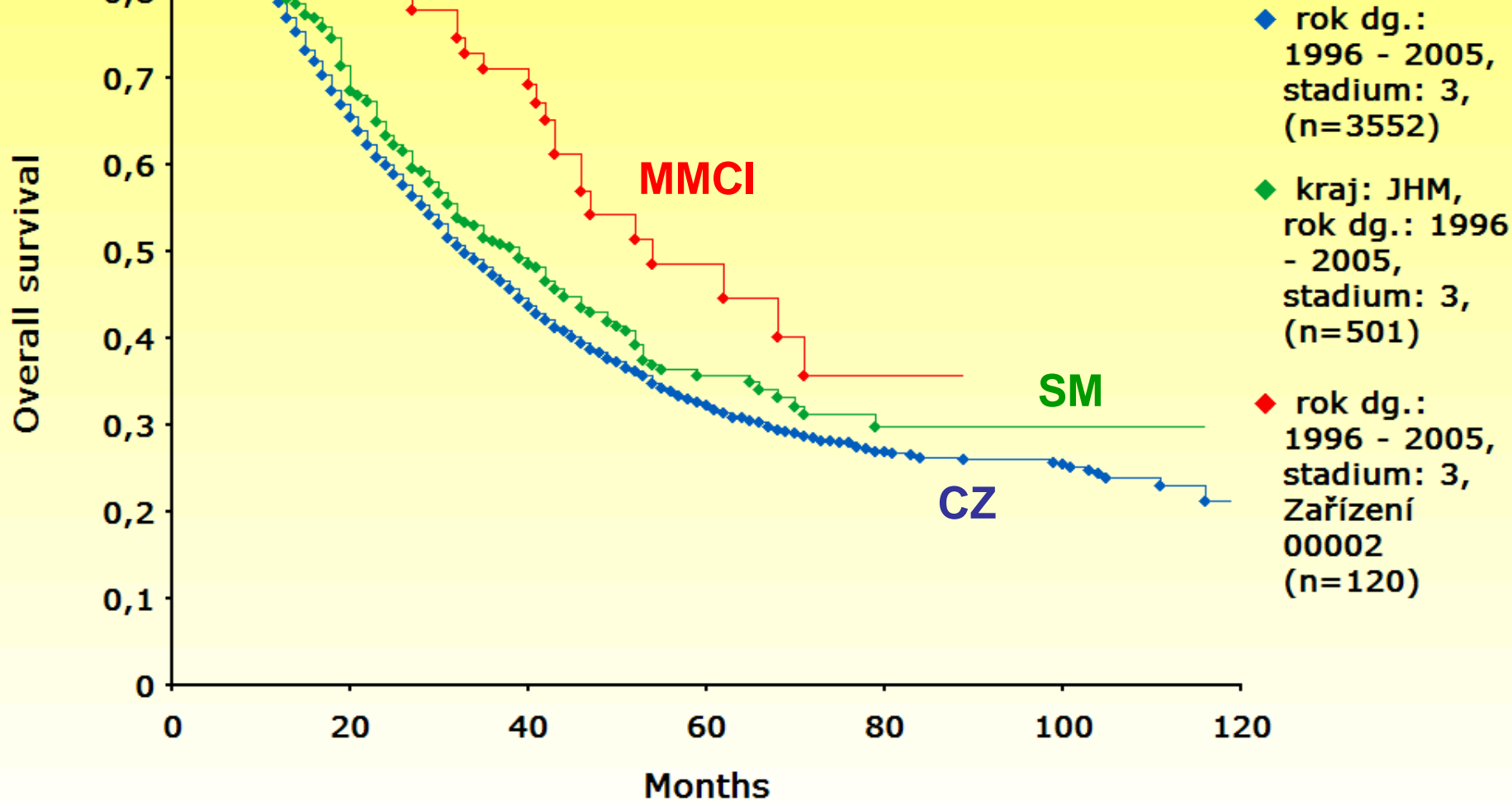
- ◆ rok dg.: 1996 - 2005, stadium: 2, Grade: I, (n=686)
- ◆ rok dg.: 1996 - 2005, stadium: 2, Grade: II, (n=2294)
- ◆ rok dg.: 1996 - 2005, stadium: 2, Grade: III, (n=748)
- ◆ rok dg.: 1996 - 2005, stadium: 2, Grade: IV, (n=19)

***In*vestigation on **G**rade**

Sur

Rectal Cancer : Stage III

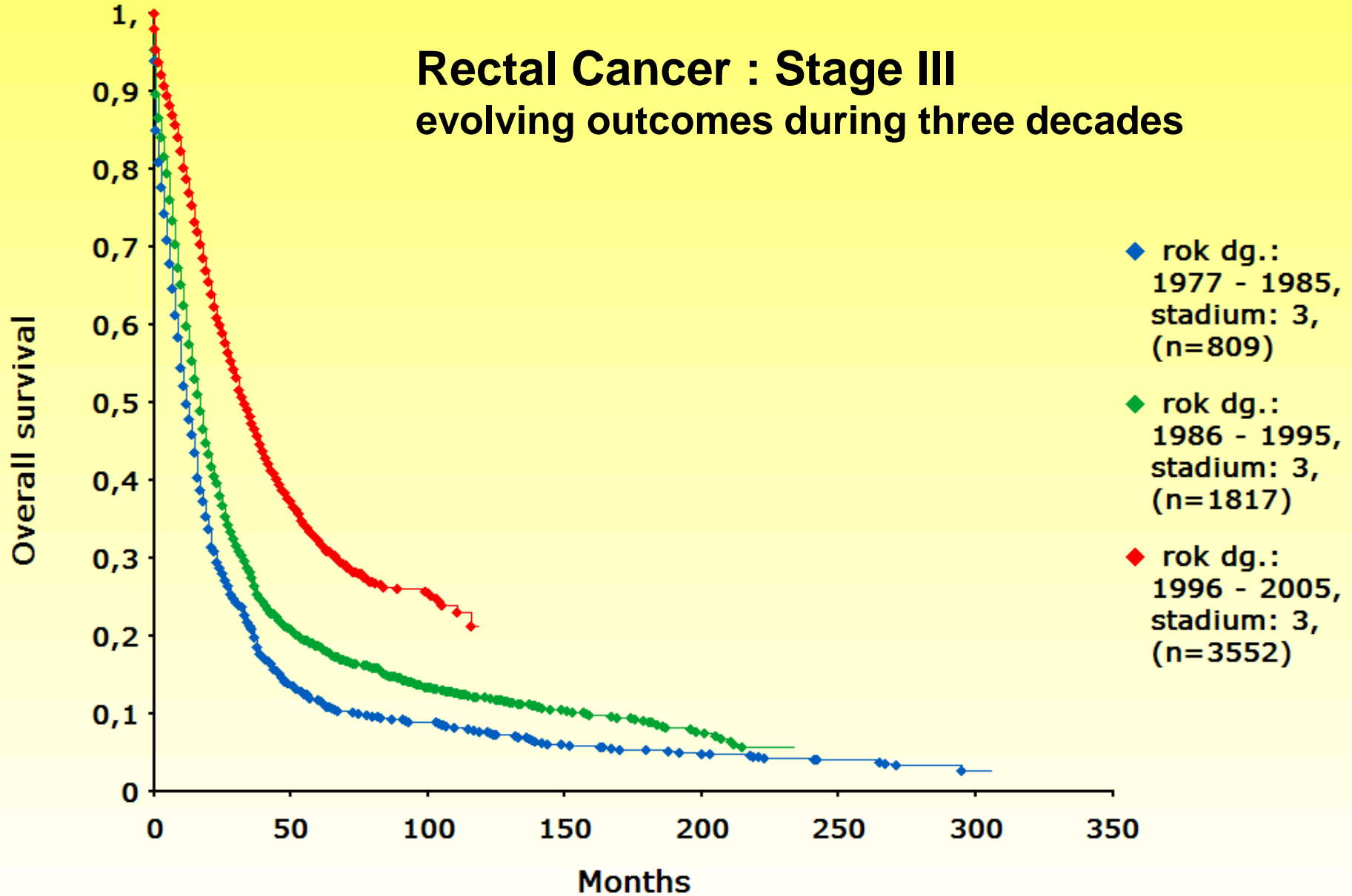
comparing institutional, regional and countrywide outcomes



Confidence-based oncology versus evidence-based oncology

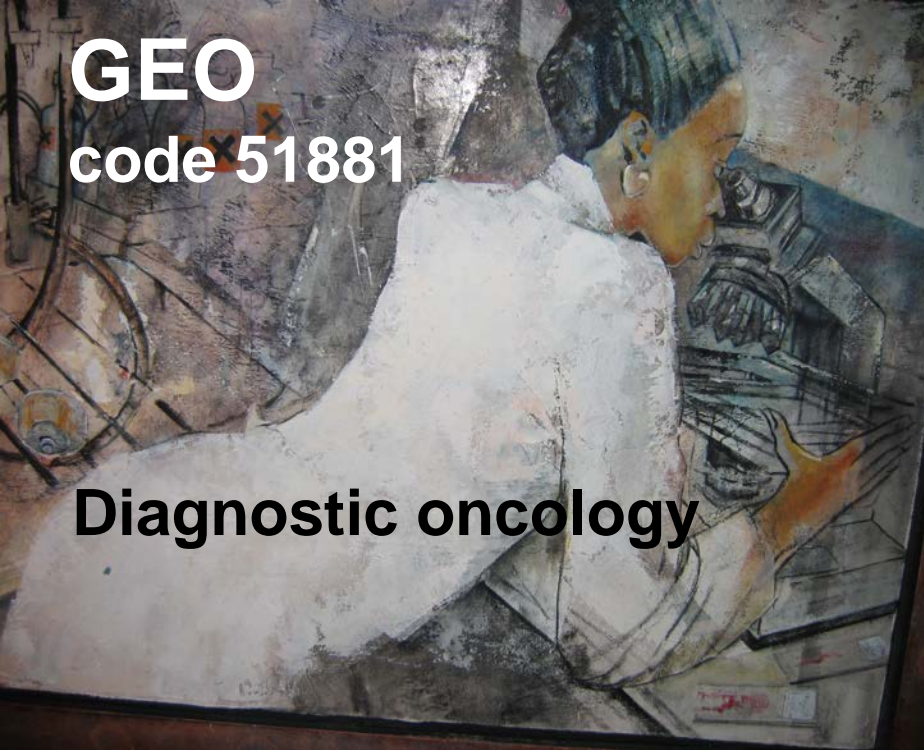
Sur

Rectal Cancer : Stage III evolving outcomes during three decades



GEO
code 51881

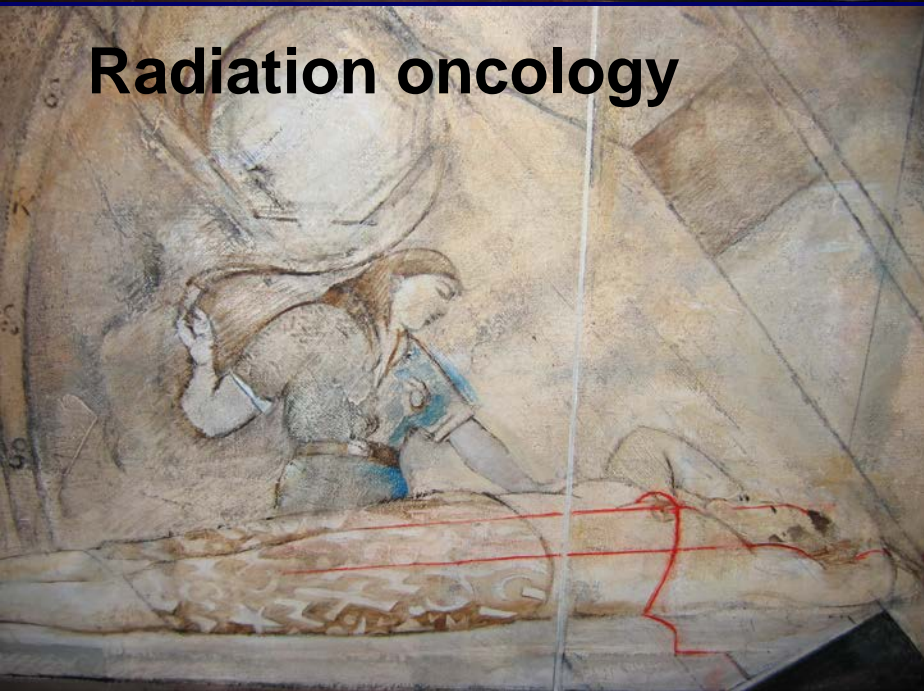
Diagnostic oncology



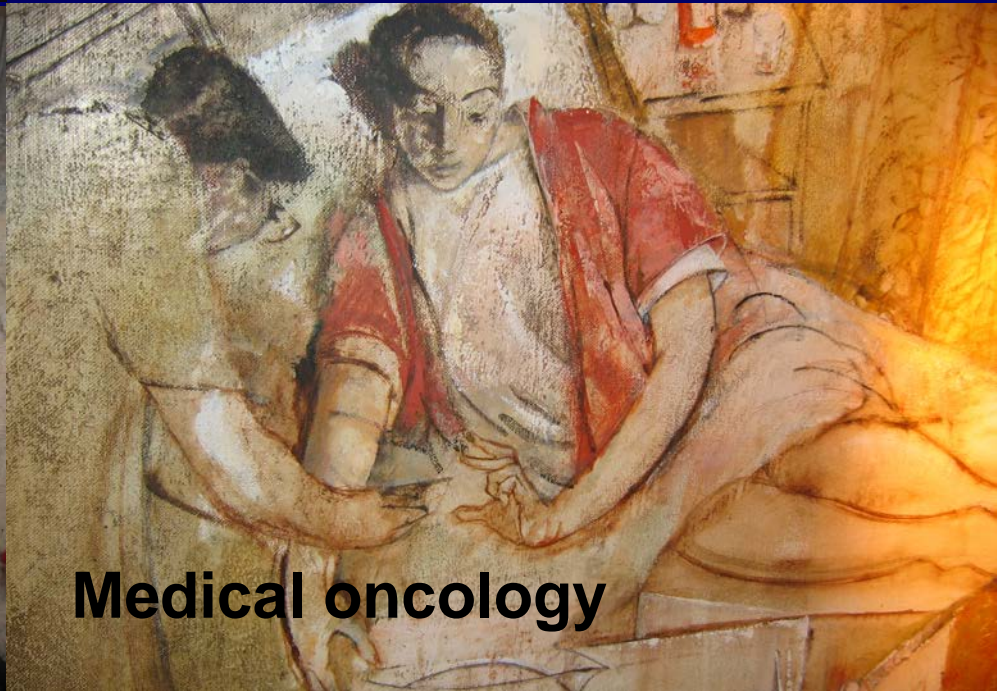
Surgical oncology



Radiation oncology



Medical oncology

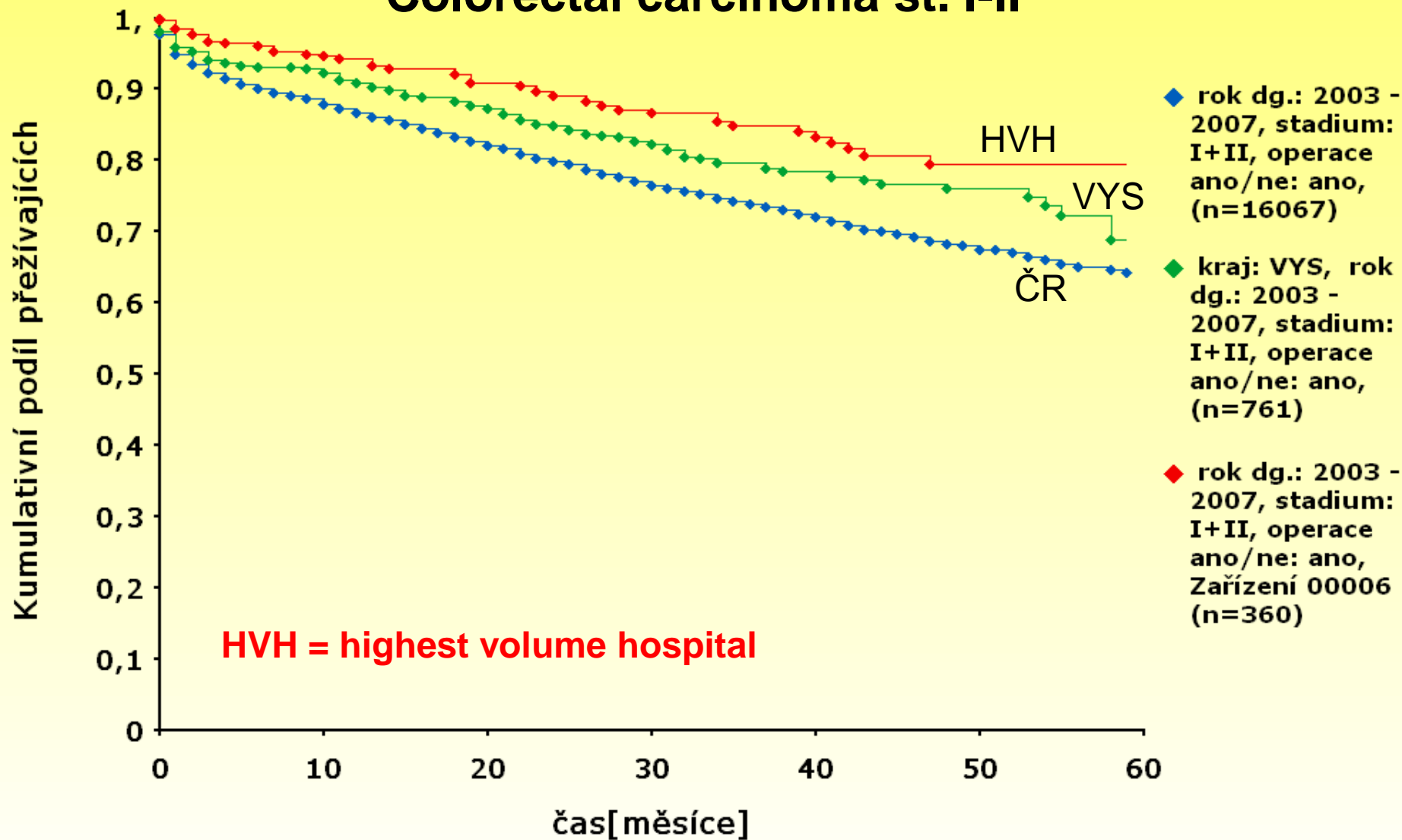


Ns

Analýza přežití

Diagnóza C18, C19, C20, C21

Colorectal carcinoma st. I-II



Specific indicators in surgical oncology of CRC

No/T Re/St/InG Sur/GEO/Ns (J.Zaloudik, 2009)

basic quality-related parameters for surgical oncology

confidence-based medicine versus evidence-based medicine

Diagnostic criteria derived from surgeon and pathologist :

No – **N**odes

T – Tumor : **T** category/ histological **T**yping

Re – **R**esection margins (as estimated by histopathologist)

St - postoperative **S**tage

InG – **I**nvestigation on **G**rade (biology - target molecules, receptors)

Performance of surgical department :

Sur – **S**urvival rates (compared with country/regional average, progress in time)

GEO – **G**uaranteed **E**stimation by **O**ncologists – teamwork : **51881**

Ns – **N**umbers of operated cases (volume effect)