



# National Cancer Plan in Germany

Ferdinand Hofstaedter

Berlin



## → Main fields of National Cancer Plan

1. Improvement of early detection
2. Improvement of structures of oncological care and quality control
3. Guarantee of efficient medicamentous therapy
4. Patients empowerment



Start 2008:

Start of the task force group

September 2011 :

Proposal for law for the general introduction and financing of clinical cancer registries by the Ministry of Health

August 2012:

Decision of federal government

April 2013:

Law early detection and cancer registry

(KFRG) §65c SDB V. (Bundestag)

## Nationaler Krebsplan

Aktueller Stand und Perspektiven



## § 65 c (April 2013)



Documentation and neutral validation of all clinical data of cancer patients from diagnosis over treatment up to follow up.

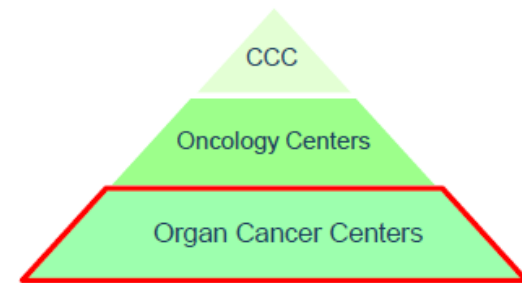
Continuous reporting of the data to physicians, stake holders and patients.

Use of data within interdisciplinary daily work (tumor boards) and in outcome research.

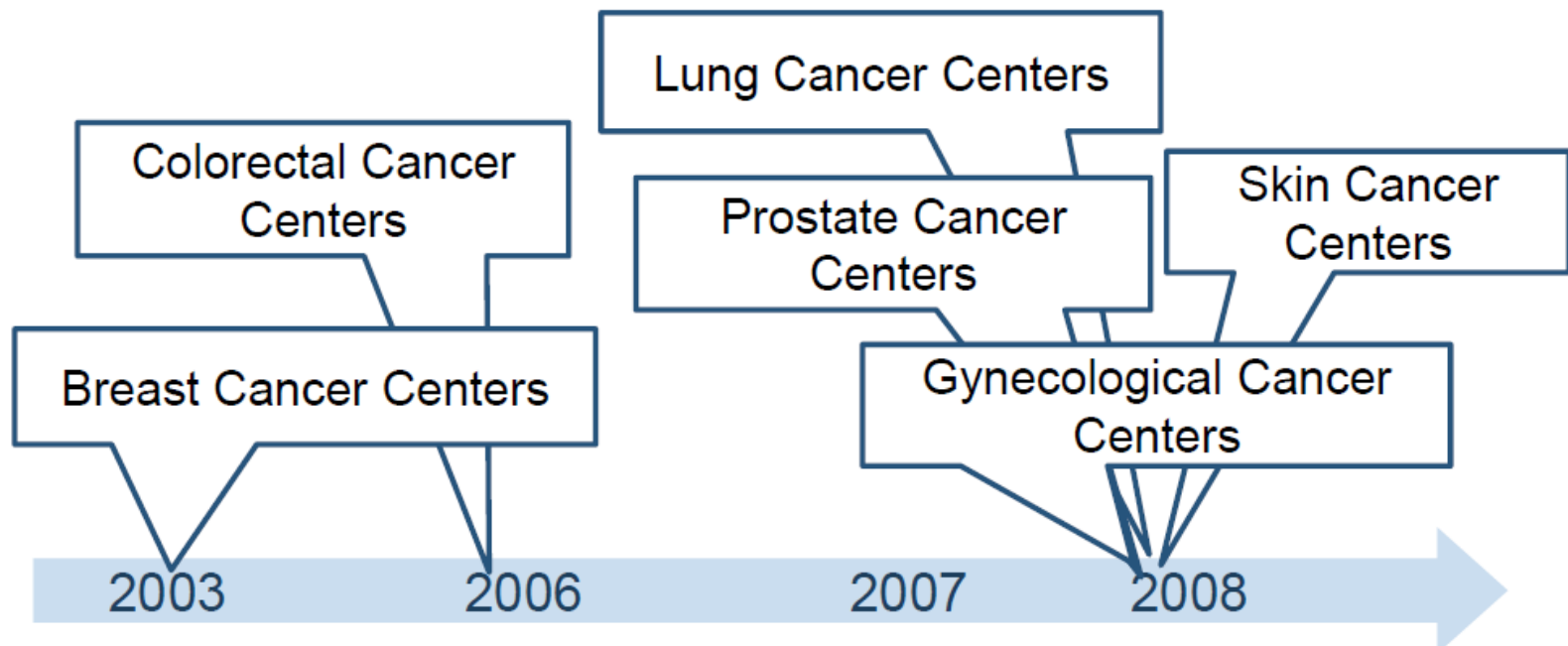


## 3 Driving forces

## Organ Cancer Centers



- Organ cancer centers specialize in one tumor entity according to the national cancer plan.
- Certification of the Organ Cancer Centers by **German Cancer Society**



# Oncological Care Centers

	Breast	Colo-rectal	Prostate	Skin	Lung	Gyn.	OZ	Panc.
<b>Certified Centers</b>	207	207	71	33	24	57	23	15
<b>Queries &amp; ongoing proceedings</b>	38	63	44	6	24	28	56	19

As of: 31.05.2011



2.



## S3 Guidelines

Formulation, propagation, implementation and continuous actualization of evidence-based guidelines (S3) for the most common oncological entities (Breast, Colorectal, Prostate, Lung, Pancreas)





3.

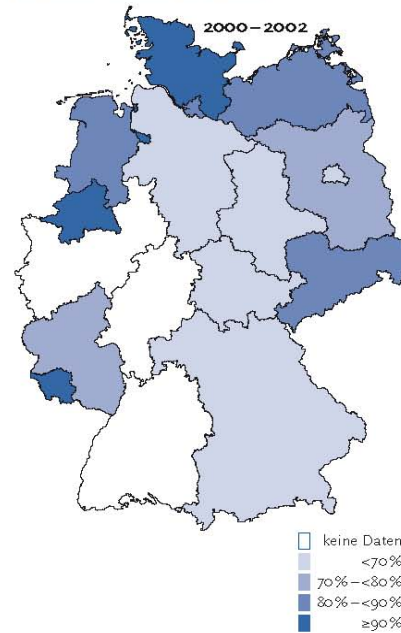


## Close cooperation with GEKID (epidemiological registries)

- Epidemiological Cancer registries in every federal state (population based)
- Clinical cancer registries (52, not all population based until now)

Abbildung 2.1.1  
Entwicklung der geschätzten Vollständigkeit der epidemiologischen Krebsregister in Deutschland, 2000 bis 2002 und  
2004 bis 2006, nach Bundesland bzw. Region  
(Mittelwert Männer und Frauen)

2000-2002



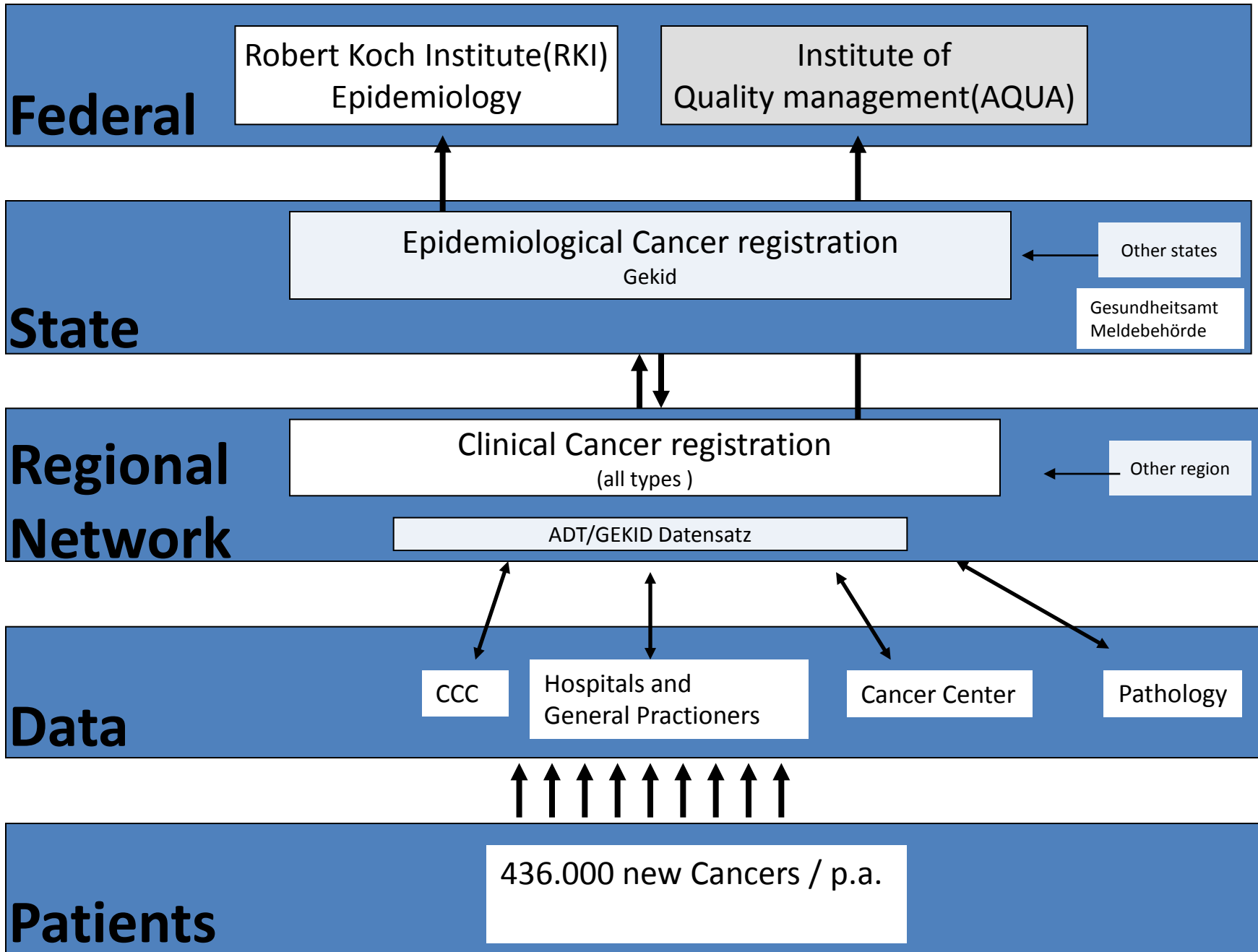
2004- 2006

<sup>1</sup>1953 Ost-Berlin, 1995 Berlin gesamt

<sup>2</sup>1986 Regierungsbezirk Münster, 2005 Nordrhein-Westfalen gesamt

<sup>3</sup>2003 Regierungsbezirk Darmstadt, 2007 Hessen gesamt

Epidemiological registration



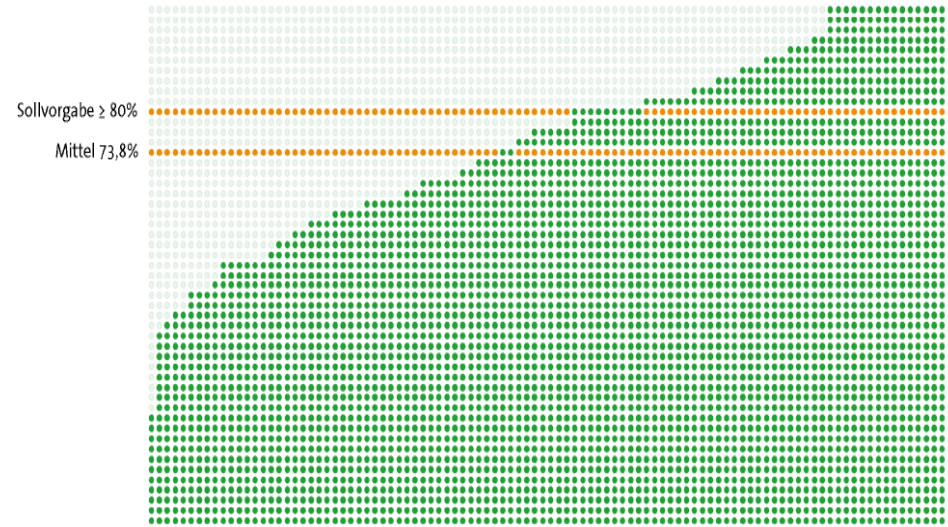
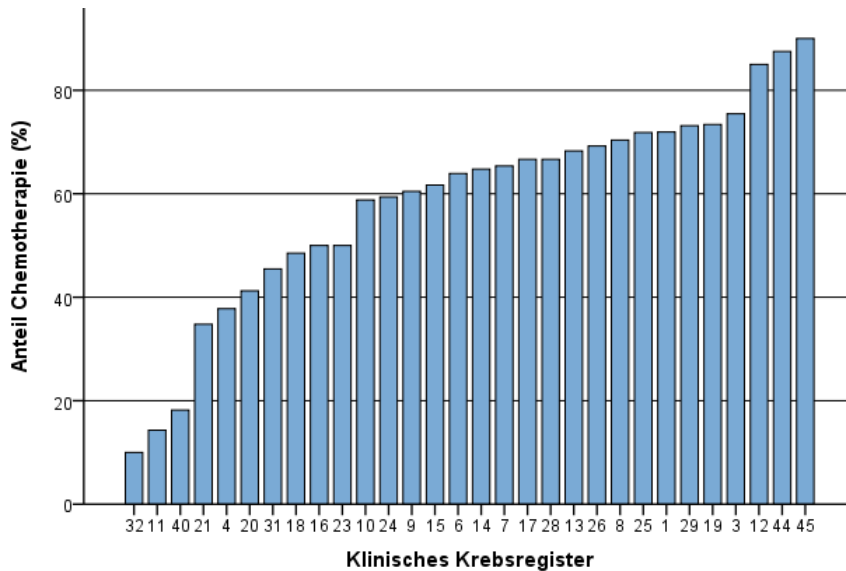
# Transparency of Quality

## Quality of intersectoral care

### Percentage of actual performed adjuvant chemotherapy 2009

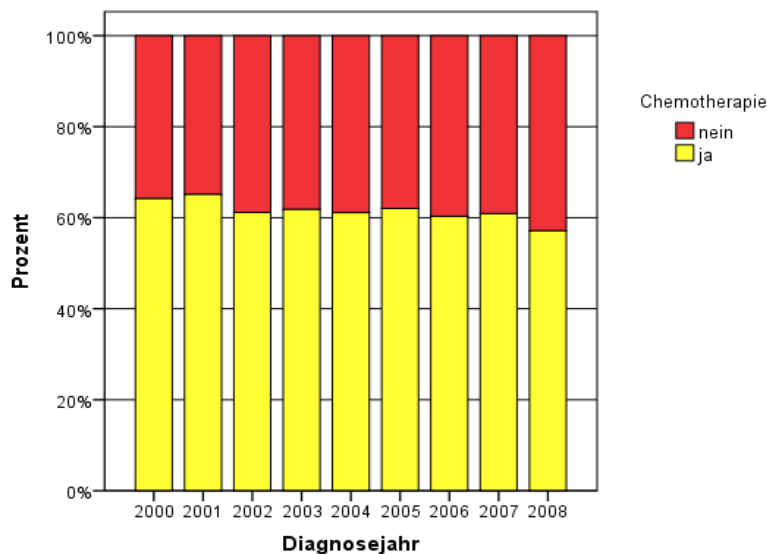
**Clinical cancer registry  
(all cases)**  
61,4%, N=2315

**Certified Centers**  
73,8%, N=2445

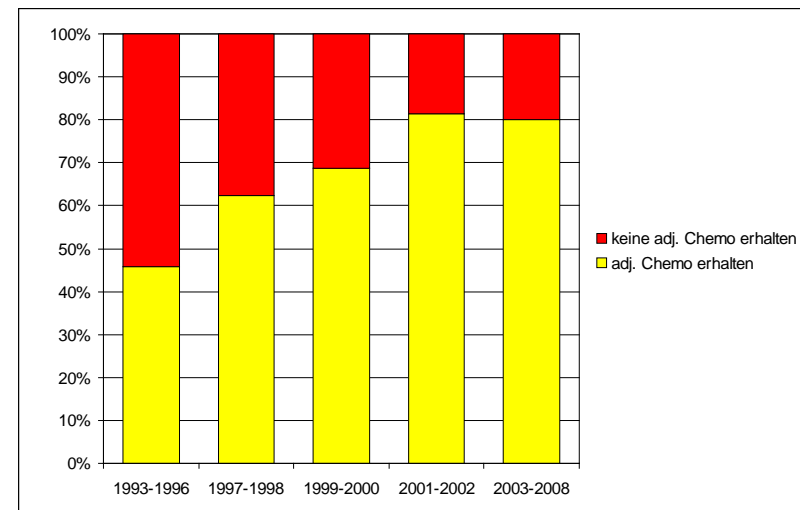


# Documentation and reporting improves oncological care

## Adjuvant Chemotherapy in patients with colon cancer stadium III 2000-2008



Federal data (n=14.066)



regional ( n= 936)



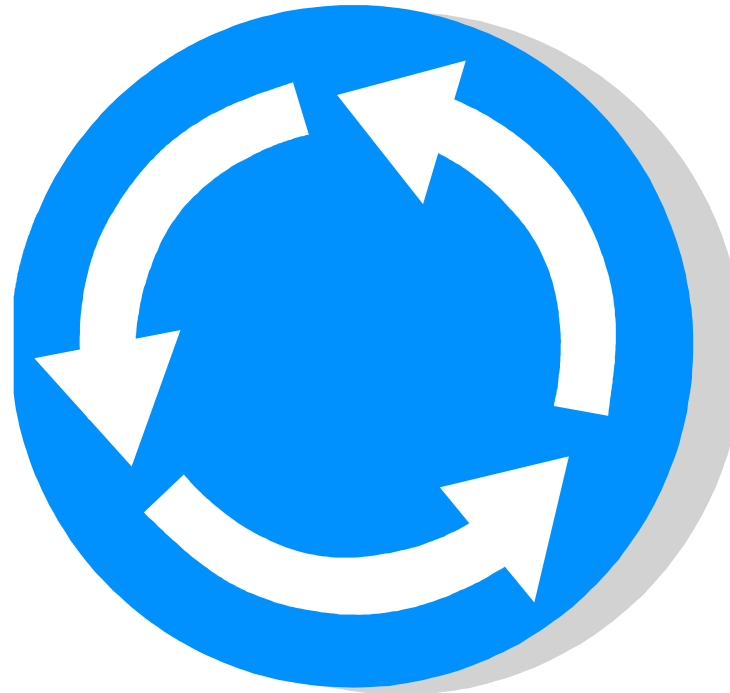
# Quality management

## PDCA



### **Guidelines:**

evidence based  
recommendations



### **Registries:**

**Documentation**

Outcome measurement

### **Centers:**

Diagnosis and treatment under  
quality controlled conditions